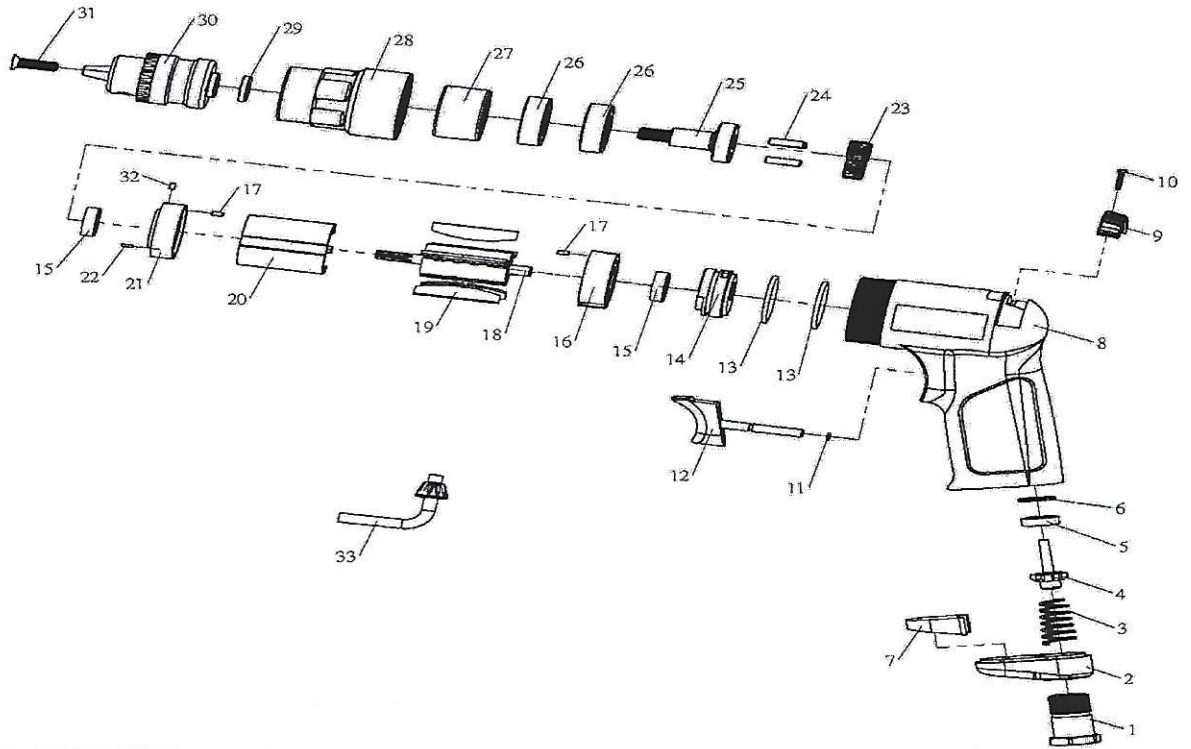




A-7238N-KL 3/8" Air Reversible Drill (Keyless)



Index	Parts No.	Description	Q'ty	Index	Parts No.	Description	Q'ty
1	7238N-KL#01	BUSHING	1	18	7238N-KL#18	ROTOR	1
2	7238N-KL#02	DEFLECTOR	1	19	7238N-KL#19	ROTOR BLADE	5
3	7238N-KL#03	SPRING	1	20	7238N-KL#20	CYLINDER	1
4	7238N-KL#04	VALVE	1	21	7238N-KL#21	FRONT PLATE	1
5	7238N-KL#05	VALVE SEAT	1	22	7238N-KL#22	PIN ($\psi 1.5 \times 4.8L$)	1
6	7238N-KL#06	SPACER	1	23	7238N-KL#23	IDLE GEAR	3
7	7238N-KL#07	SILENCER	1	24	7238N-KL#24	PIN ($\psi 4 \times 15.6$)	3
8	7238N-KL#08	HOUSING	1	25	7238N-KL#25	SPINDLE	1
9	7238N-KL#09	VALVE LEVER	1	26	7238N-KL#26	BALL BEARING (6201zz)	2
10	7238N-KL#10	TAPING SCREW	1	27	7238N-KL#27	RING GEAR	1
11	7238N-KL#11	O-RING (3×1)	1	28	7238N-KL#28	FRONT HOUSING	1
12	7238N-KL#12	TRIGGER	1	29	7238N-KL#29	Chuck Spacer	1
13	7238N-KL#13	(27×2)	2	30	7238N-KL#30	DRILL CHUCK (3/8")	1
14	7238N-KL#14	VALVE BODY	1	31	7238N-KL#31	SCREW (M5×20L)	1
15	7238N-KL#15	Bearing (626)	2	32	7238N-KL#32	SPRING PIN (M2.5×4)	1
16	7238N-KL#16	REAR PLATE	1	33	7238N-KL#33	KEY	1
17	7238N-KL#17	SPRING PIN	2				