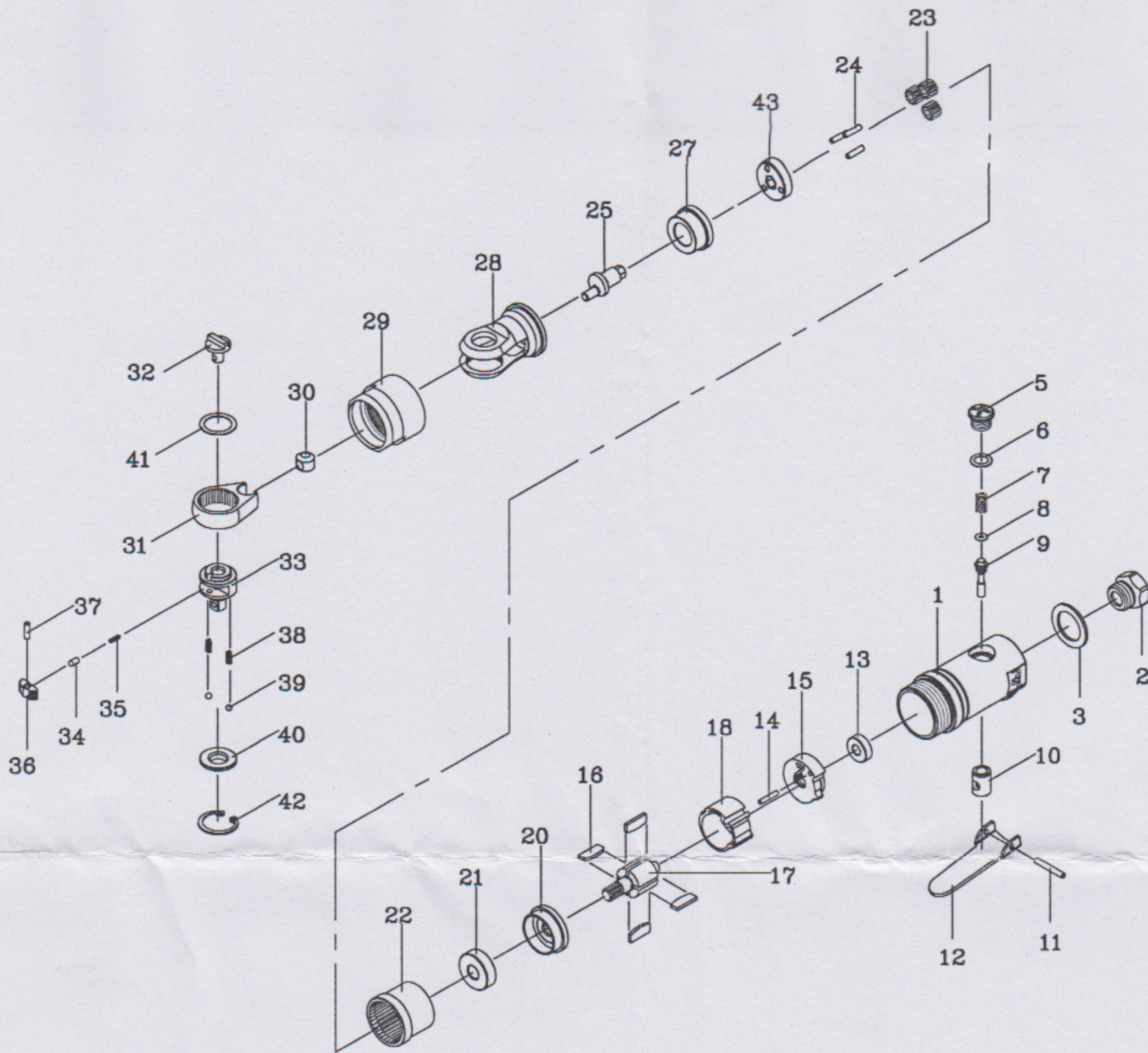


saTra S-R38H 3/8" Mini Air Ratchet Wrench



Specification:

Capacity(Bolt Size)	3/8"
Free Speed	370 R.P.M.
Max. Torque	26 Nm

Recom.Air Pressure	90 P.S.I.
Av.Air Consumption	18 SCFM
Air Inlet	1/4"-18NPT

Hose Size	5/16"(I.D.)
Length	140 mm
Weight	0.4 Kgs

Index No.	Part No.	Description	Q'TY
01	R38H01	THROTTLE HANDLE	1
02	R38H02	AIR INLET BUSHING	1
03	R38H03	EXHAUST DEFLECTOR	1
05	R38H05	THROTTLE VALVE PLUG	1
06	R38H06	O-RING	1
07	R38H07	SPRING	1
08	R38H08	O-RING	1
09	R38H09	VALVE STEM	1
10	R38H10	THROTTLE VALVE	1
11	R38H11	SPRING PIN	1
12	R38H12	THROTTLE LEVER	1
13	R38H13	BALL BEARING	1
14	R38H14	SPRING PIN	1
15	R38H15	REAR END PLATE	1
16	R38H16	ROTOR BLADE	4
17	R38H17	ROTOR	1
18	R38H18	CYLINDER	1
20	R38H20	FRONT END PLATE	1
21	R38H21	BALL BEARING	1
22	R38H22	INTERNAL GEAR	1

Index No.	Part No.	Description	Q'TY
23	R38H23	IDLER GEAR	3
24	R38H24	NEEDLE ROLLER	3
25	R38H25	CRANK SHAFT	1
27	R38H27	BUSHING	1
28	R38H28	RATCHET HOUSING	1
29	R38H29	CLAMP NUT	1
30	R38H30	DRIVE BUSHING	1
31	R38H31	YOKE	1
32	R38H32	REVERSE BUTTON	1
33	R38H33	3/8" RATCHET ANVIL	1
34	R38H34	SPRING CAP	1
35	R38H35	SPRING	1
36	R38H36	PAWL	1
37	R38H37	NEEDLE ROLLER	1
38	R38H38	FRICTION SPRING	2
39	R38H39	STEEL BALL	2
40	R38H40	3/8" THRUST WASHER	1
41	R38H41	WASHER	1
42	R38H42	INTERNAL RETAINING RING	1
43	R38H43	IDLER GEAR PLATE	1