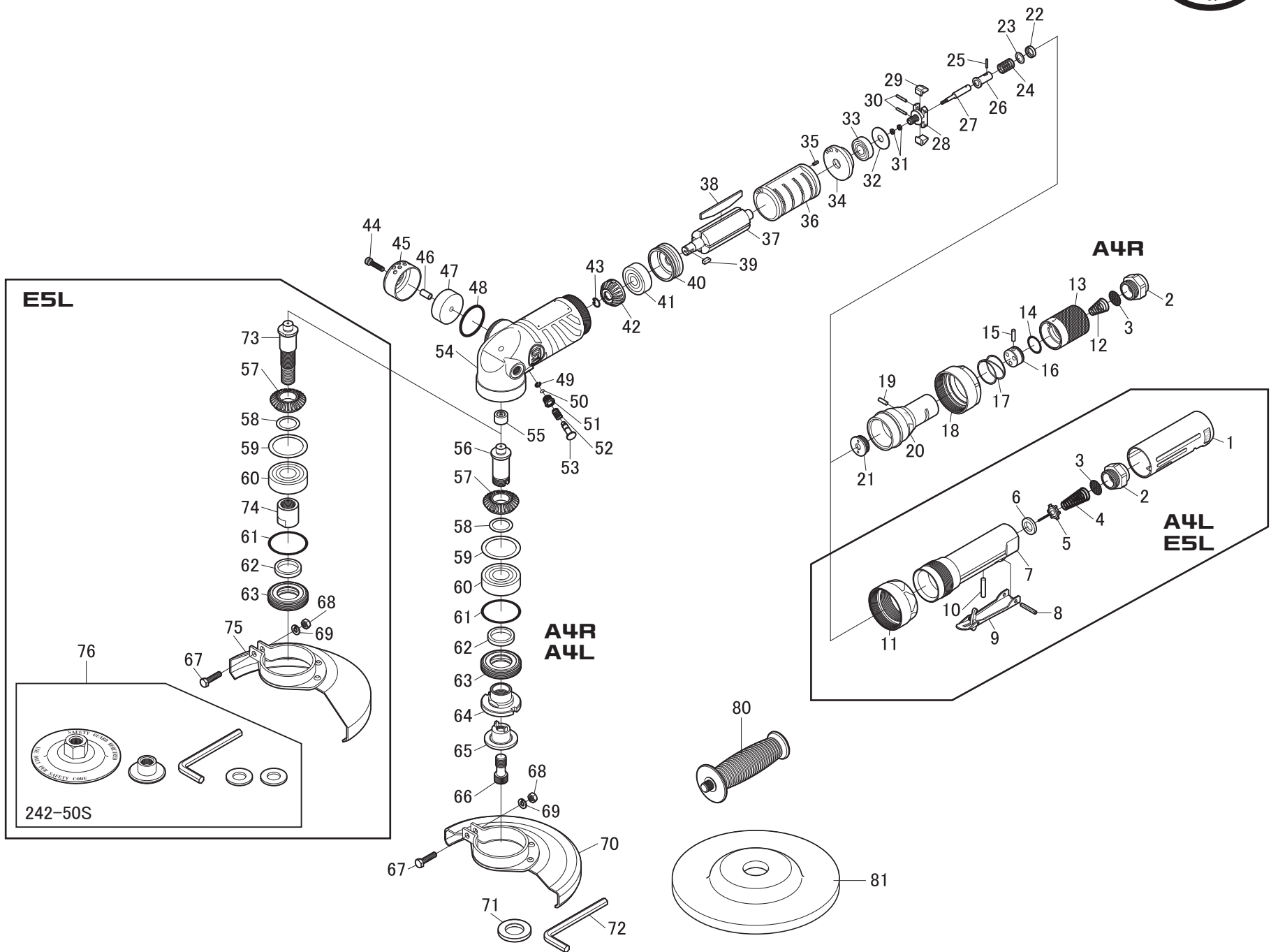


SI-AG7-A4L SI-AG7-A4R 7" Angle Disc Grinder SI-AG7-E5L



Ref. No.	Parts No.	Description	Q'ty	Ref. No.	Parts No.	Description	Q'ty	Ref. No.	Parts No.	Description	Q'ty
SI-AG7-A4R				SI-AG7-A4R, SI-AG7-A4L				COMMON PARTS			
1	242SIL-4	Grip Cover	1	56	242SIL-5	Spindle(1/2-16UN)	1	22	242-31	Governor Valve Spring Holder	1
2	242-6	Bushing	1	57	242-9	Bevel Gear	1	23A	242-32A	Shim(0.2mm)	★
3	2011AC-9	Screen	1	58A	242-19A	Shim(0.2mm)	★	23B	242-32B	Shim(0.3mm)	
4	242SIL-10	Valve Spring	1	58B	242-19B	Shim(0.3mm)		23C	242-32C	Shim(0.5mm)	
5	966-11	Valve	1	58C	242-19C	Shim(0.5mm)		24	242-30	Governor Spring	1
6	1071C-20	Valve Seat	1	59	242-20	Bearing Washer	1	25	242-33	Needle Pin	1
7	242SIL-3	Governor Case incl. Bush (242SIL-11)	1	60	6204ZZNSK	Ball Bearing	1	26	242-29	Governor Valve	1
8	40-25	Roll Pin(4ø-25mm)	1	61	S-44	O-Ring	1	27	242-28	Governor Shaft	1
9	242SIL-7	Throttle Lever	1	62	242-18	Felt Ring	1	28	242-26	Governor Cage	1
10	242SIL-13	Valve Pin	1	63	242-14	Spindle Nut	1	29	242-27	Governor Weight	1
11	242SIL-2	Coupling Nut	1	64	242-15	Disc Nut	1	30	2500-15-8	Needle Roller	2
SI-AG7-A4L, SI-AG7-E5L				65	242-16	Disc Nut	1	31	N3-M30	Nut	2
2	242-6	Bushing	1	66	242-17	Disc Screw	1	32	242-24	Bearing Cover	1
3	2011AC-9	Screen	1	67	W-M60-250	Bolt	1	33	6001ZZ	Ball Bearing	1
12	242-36	Throttle Valve Spring	1	68	N2-M60	Nut	1	34	242-11A	Rear Plate	1
13	242-5	Throttle Valve Handle	1	69	HSW-60	Washer	1	35	30-8	Roll Pin(3ø-8mm)	1
14	S-20	O-Ring	1	70	242SIL-25	Disc Cover	1	36	242-12	Cylinder	1
15	242-38	Roll Pin	1	71	242SIL-23	Cut Off Attachment	1	37	242-13	Rotor	1
16	242-34	Throttle Valve	1	72	WRA-8	8mm Allen Wrench	1	38	242-22	Rotor Blade	4
17	242-35	Throttle Valve Handle Spring	1	SI-AG7-E5L				39	242-23	Key	1
18	242-2	Cup Nut	1	57	242-9	Bevel Gear	1	40	242-10A	Front Plate A	1
19	242-39	Roll Pin	1	58A	242-19A	Shim(0.2mm)	★	41	6301ZZNSK	Ball Bearing	1
20	242-3	Governor Case	1	58B	242-19B	Shim(0.3mm)		42	242SIL-21	Pinion Gear	1
21	242-4	Bushing	1	58C	242-19C	Shim(0.5mm)		43	242-25	Ring	1
				59	242-20	Bearing Washer	1	44	Z-M50-220	Cap Screw	1
				60	6204ZZNSK	Ball Bearing	1	45	242SIL-6	Deflector	1
				61	S-44	O-Ring	1	46	242SIL-12	Collar	1
				62	242-18	Felt Ring	1	47	242SIL-9	Muffler	1
				63	242-14	Spindle Nut	1	48	S-38	O-Ring	1
				67	W-M60-250	Bolt	1	49	2011AC-94A	Retaining Ring	1
				68	N2-M60	Nut	1	50	2011AC-106	O-Ring	1
				69	HSW-60	Washer	1	51	2011AC-92A	Lock Pin Nut	1
				73	242SIL-8	Spindle(5/8-11UNC)	1	52	2011AC-95A	Spring	1
				74	242SIL-15	Spindle Collar	1	53	2011AC-93A	Lock Pin	1
				75	242SIL-14	Disc Cover	1	54	242SIL-1	Motor Housing	1
				76	242-50S	Disc Attachment Set	1	55	BK1210	Needle Bearing	1
								80	242SIL-20	Anti Vibration Handle	1
								81	280-28E	7" Disc	1